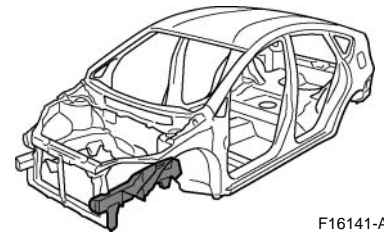


FRONT SIDE MEMBER (ASSY)

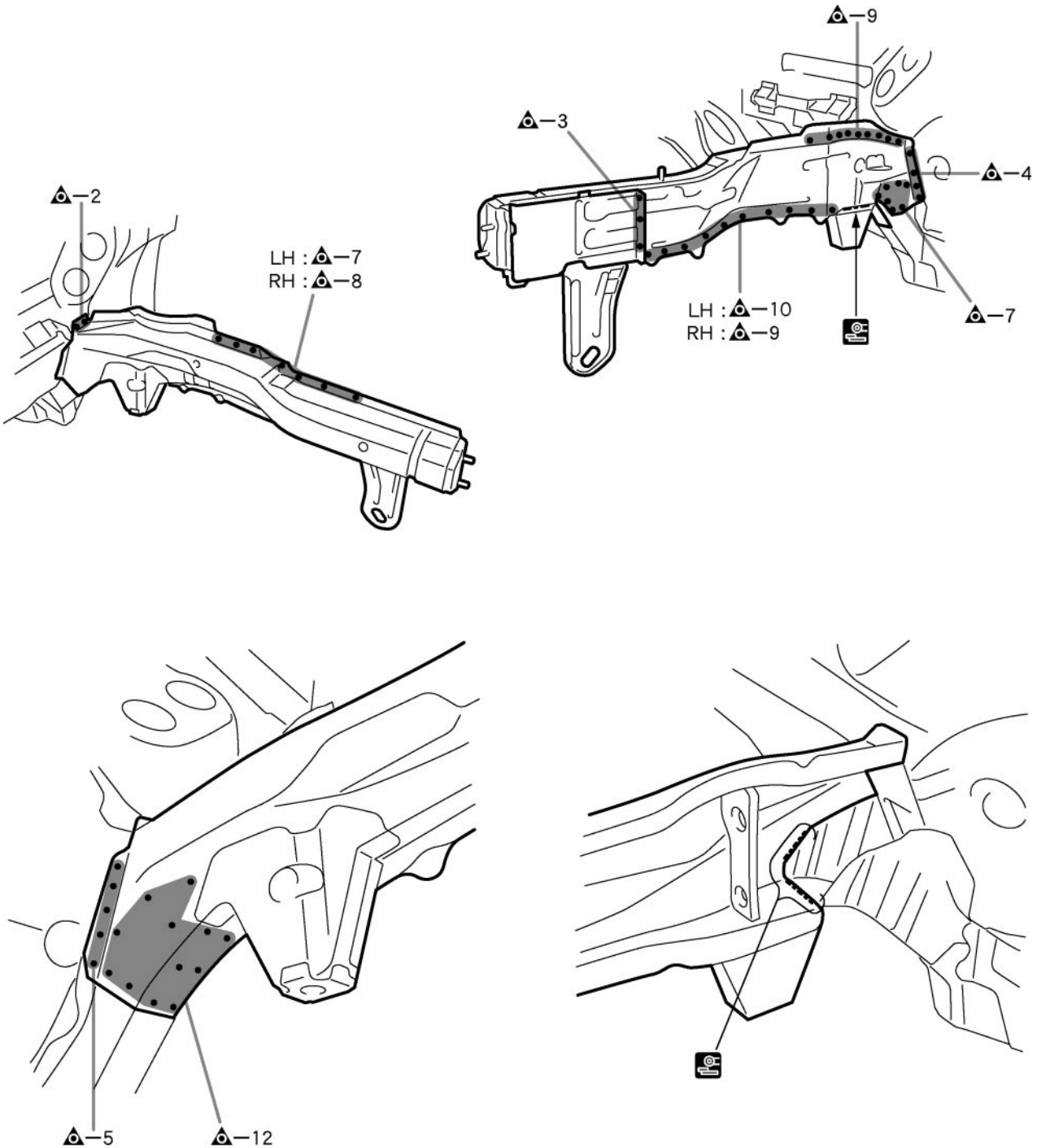
REPLACEMENT

With the radiator side support, front crossmember and front fender apron removed.



F16141-A

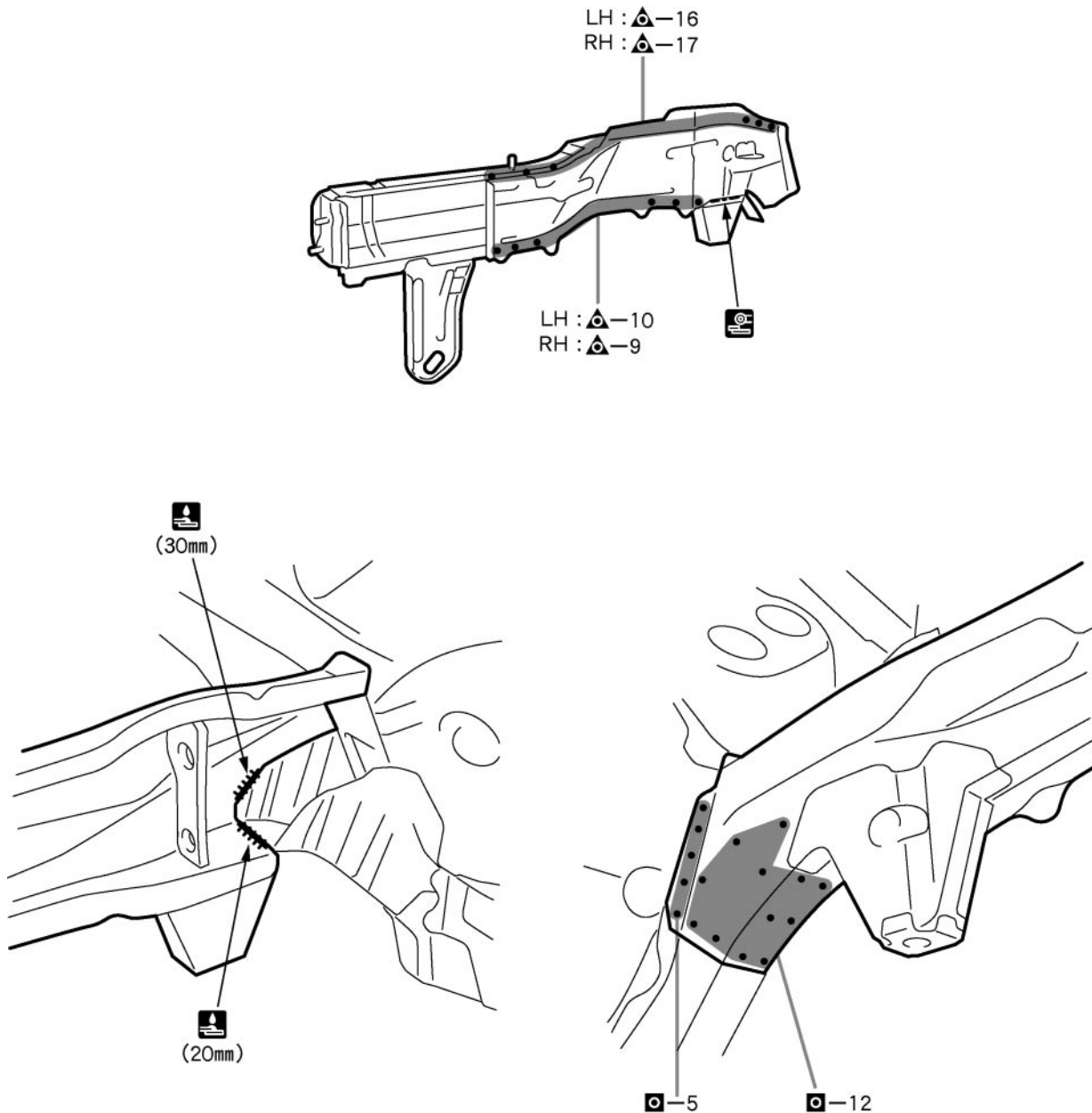
REMOVAL



F16141

INSTALLATION

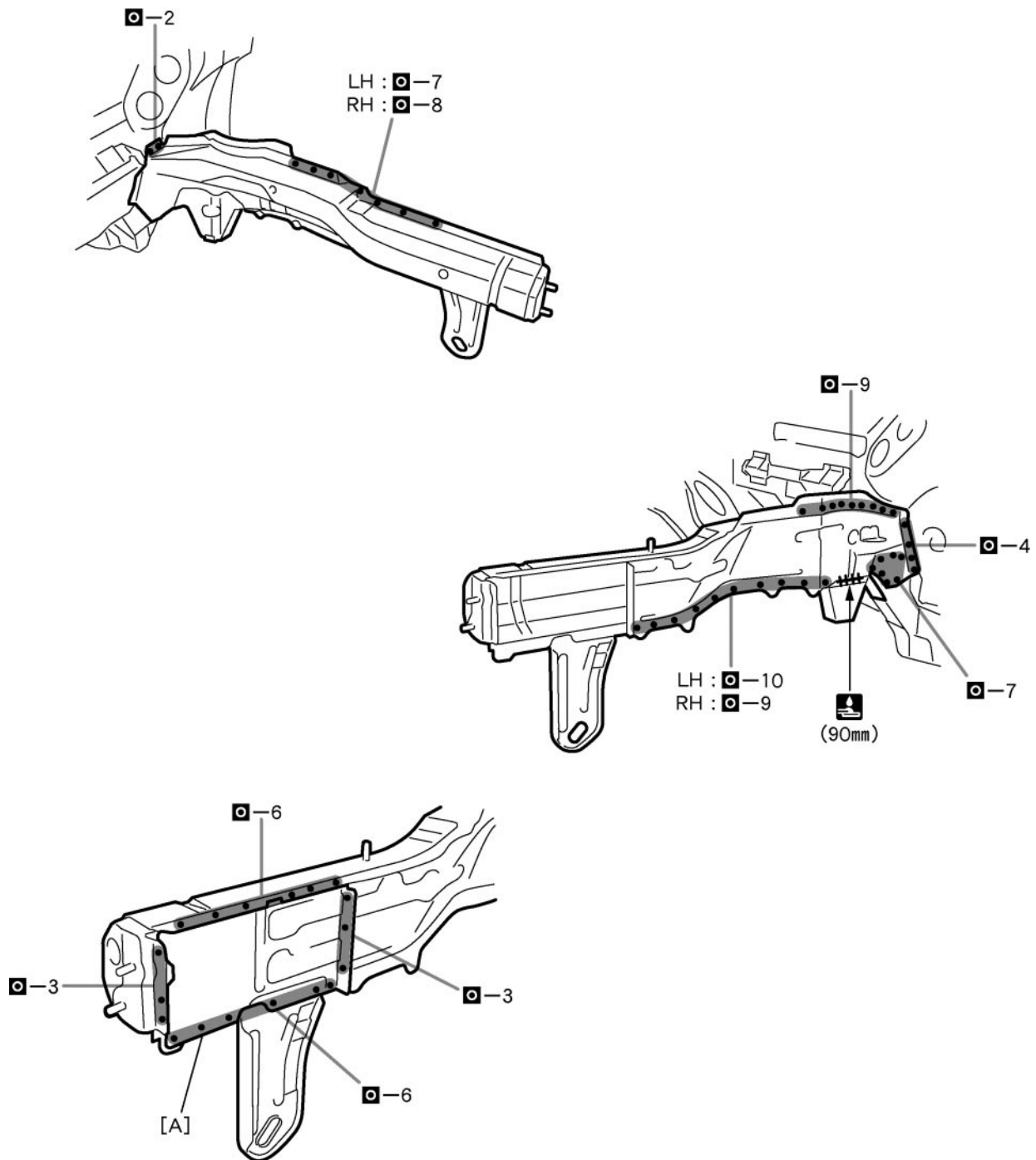
- Temporarily install the new parts and measure each part of the new parts in accordance with the body dimension diagram. (See the body dimension diagram)
- Inspect the fitting of the related parts around the new parts before welding. This affects the appearance of the finish.
- After welding, apply the polyurethane foam to the corresponding parts.
- After welding, apply body sealer and under-coating to the corresponding parts.
- After applying the top coat layer, apply anti-rust agent to the inside of the necked section structural weld spots.



F16142

20mm (0.79in.)

30mm (1.18in.)



F16143

POINT

1 Make sure each measurement is correct, as this parts affects the front wheel alignment.

PART NAME

[A] Front Sidemember Extension
90mm (3.54in.)